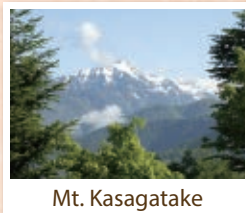


# Hirayu Onsen Map



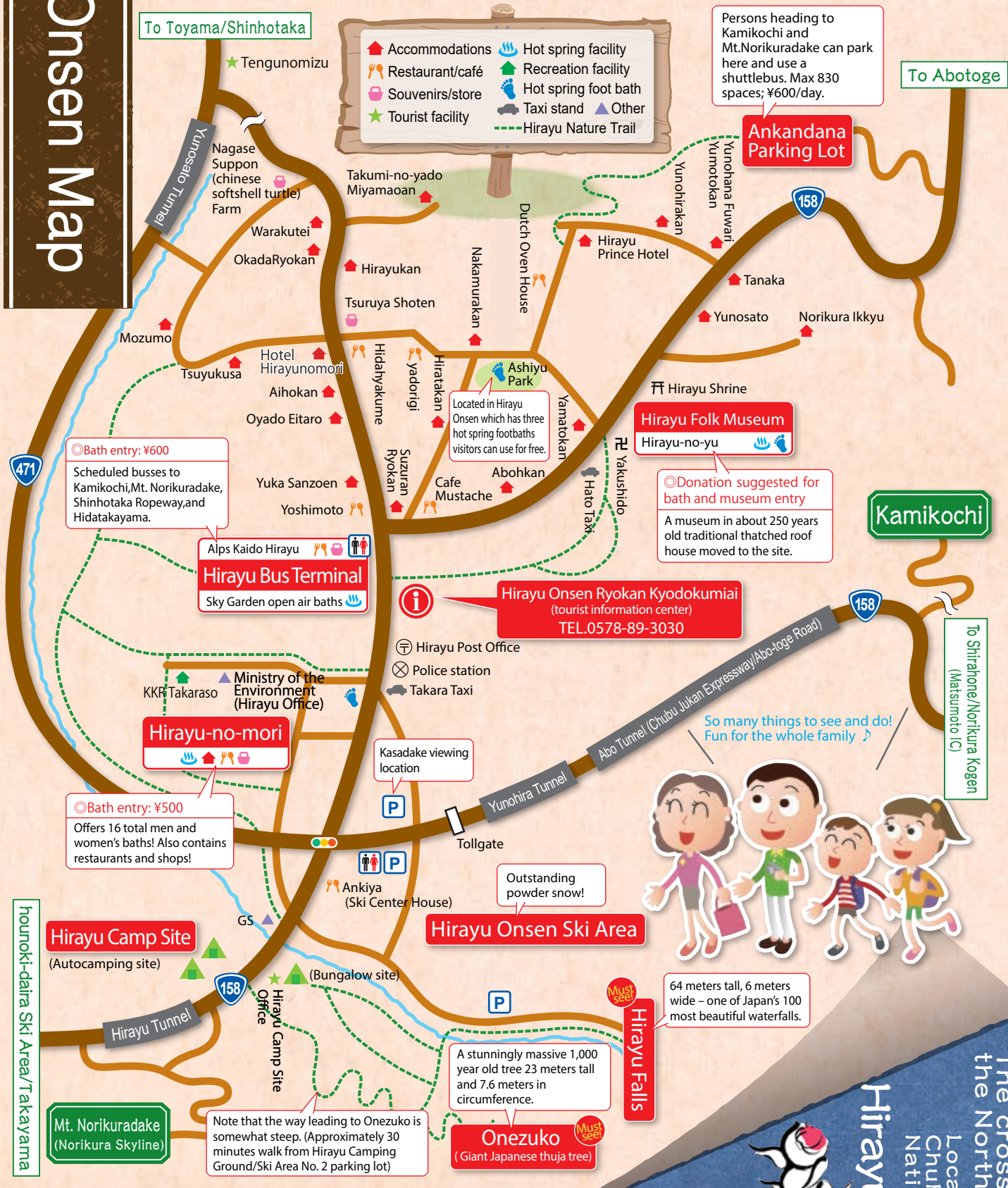
To Toyama/Shinhotaka

To Abotoge

▲ Accommodations ♨️ Hot spring facility  
🍴 Restaurant/café 🌳 Recreation facility  
🛍️ Souvenirs/store 👣 Hot spring foot bath  
★ Tourist facility 🚗 Taxi stand ▲ Other  
--- Hirayu Nature Trail

Persons heading to Kamikochi and Mt.Norikuradake can park here and use a shuttlebus. Max 830 spaces; ¥600/day.

**Ankandana Parking Lot**



◎Bath entry: ¥600  
Scheduled busses to Kamikochi, Mt. Norikuradake, Shinhotaka Ropeway, and Hidatakayama.

**Hirayu Bus Terminal**  
Sky Garden open air baths

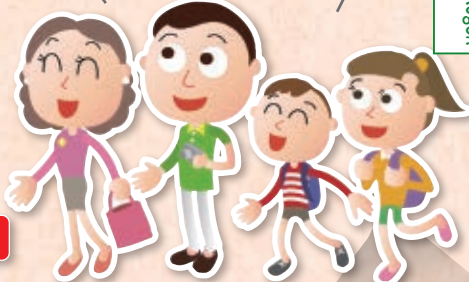
**Hirayu Onsen Ryokan Kyodokumiai**  
(tourist information center)  
TEL.0578-89-3030

◎Donation suggested for bath and museum entry  
A museum in about 250 years old traditional thatched roof house moved to the site.

◎Bath entry: ¥500  
Offers 16 total men and women's baths! Also contains restaurants and shops!

**Hirayu-no-mori**

**Hirayu Onsen Ski Area**



So many things to see and do!  
Fun for the whole family

64 meters tall, 6 meters wide - one of Japan's 100 most beautiful waterfalls.

**Hirayu Falls**

**Onezuko**  
(Giant Japanese thuja tree)

A stunningly massive 1,000 year old tree 23 meters tall and 7.6 meters in circumference.

Note that the way leading to Onezuko is somewhat steep. (Approximately 30 minutes walk from Hirayu Camping Ground/Ski Area No.2 parking lot)

**Hirayu Camp Site**  
(Autocamping site)

**Mt. Norikuradake**  
(Norikura Skyline)

To Shirahone/Norikura Kogen (Matsumoto (C))

**Hirayu Onsen**  
Located in Chubu-Sangaku National Park  
The crossroads of the Northern Alps



**Hirayu Onsen Tourism Information Center**

〒506-1433 Hirayu Onsen, Okuhida Hot Spring Village, Takayama, Gifu

TEL.0578-89-3030 FAX.0578-89-3130

✉ yoyaku@hirayuonsen.net 🌐 http://hirayuonsen.or.jp/